

產品簡介



- A型:** 夾縮支撐, 在初始位置時, 支撐頭在內部彈簧的作用下處於最上端, 工作時依靠工件在下放時的重力下壓支撐頭使之同步向下, 在工件穩妥的放在治具上時就停止下行, 支撐頭也停止下行, 加油壓後支撐缸鎖死給工件提供支撐并停止運行。
- B型:** 上行支撐, 在初始位置時, 支撐頭位於最下端, 工作時, 給支撐缸加油壓使支撐頭上行, 至碰到工作時支撐頭立刻停止上行并繼續加壓至鎖死, 這樣支撐頭就在當前位置給工件提供支撐并停止。

Introduction of product

- ◆ **Type A: Knocking-out with a spring**, the spring is used to control a clamping force when the knocking-out rod (piston rod) extends to a highest knocking-out position and clamps the workpiece.
- ◆ **Type B: Knocking-out with oil pressure**, it is operated by means of oil pressure and is knocked out when being filled with oil and clamp the workpiece.

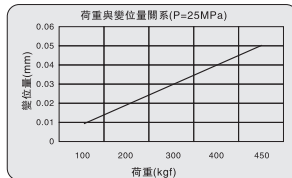
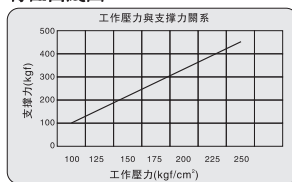
訂購標示法 Ordering Code

HSP -- 16 -- A

特性資料 Specification

類 型	HSP-16A	HSP-16B
使用壓力範圍 (kgf/cm ²)	100 - 250	
壓緊行程 (mm)	8	
活塞杆徑 (mm)	φ16	
支撐力 (kgf)/工作壓力 (kgf/cm ²)	320/200	
作動方式	單動式	

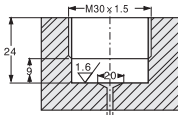
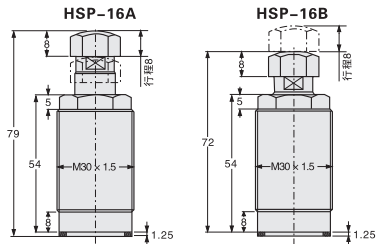
特性曲線圖 HSP-16 ★



- 注意: ◆ 支撐力與轉角的支持力要相匹配。
 ◆ 支撐力至少為單個轉角支持力的150%
 ◆ 不能超邊界大流量, 避免過早鎖死。
 ◆ 基本上在中間位置設置支撐缸
 ◆ 安裝時盡可能垂直于工作面, 傾斜勿超過10°。

Attention:

- ◆ The supporting force must match the clamp force of the swing clamp.
 The supporting force at least is equal to 150% of the clamp force of a swing clamp.
 ◆ Do not exceed the maximum velocity of flow and avoid clamping it too early
 ◆ Install the supporting cylinder in the middle place best.
 ◆ The angle degree between the supporting cylinder and working face could not be larger than 10° while installing.



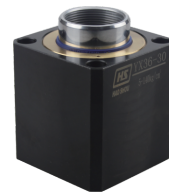
安裝尺寸

產品簡介

此型式油缸結構緊湊, 設計合理, 根據不同厚度工件, 當支撐缸進行對工件工作時, 避免出現幹涉時, 可採用伸縮底座。

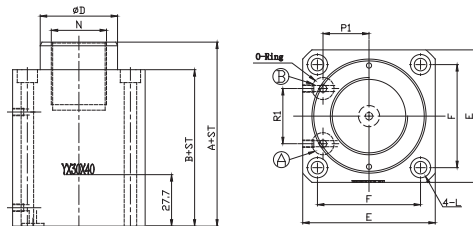
Introduction of product

This type of cylinder is compact in structure. Rational design. According to the different thickness of workpiece. When the supporting cylinder is working on the workpiece. Avoid interference. Retractable base.



外特性資料 Dspecification

類型 Type	YX-30	YX-36
使用力範圍 Range of pressure (kgf/cm ²)		5~140kg/cm ²
使用液體 Fluid		已濾清之標準液壓油 Filtered oil
作動方式 Acting type		復動式 Double acting
標準行程 Standard stroke		請參考尺寸表 Refer to the dimensional table



- A 夾持油孔
Clamping port
- B 放鬆油孔
Unclamping port

外形尺寸表 Dimension table

單位 (Unit) : mm

ITEM	MODEL	YX-30	YX-36
A		60	60
B		45	45
φD		42	42
E	46	□72	□72
F		□56	□56
L		φ6.8-φ11x7D	φ6.8-φ11x7D
P1		25	25
R1		30	30
N		M30x1.5x37D	M36x1.5x37D
O-Ring		P9	P9