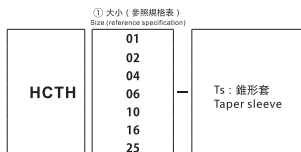
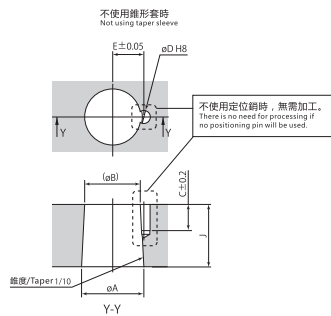


型號表示

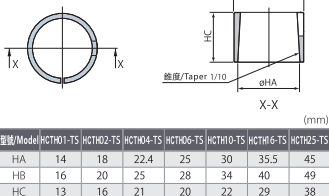
HCTH □-TS (例: HCTH 06-TS)



夾緊臂加工圖 / Clamp arm details



錐形套 / Taper sleeve



型號/Model	HCTH01-TS	HCTH02-TS	HCTH04-TS	HCTH06-TS	HCTH10-TS	HCTH16-TS	HCTH25-TS
HA	14	18	22.4	25	30	35.5	45
HB	16	20	25	28	34	40	49
HC	13	16	21	20	22	29	38

夾緊臂型號 Clamp models	HCTU 01 HCTT 01	HCTU 02 HCTT 02	HCTU 04 HBTU 04	HCTU 06 HCTT 06	HCTU 10 HCTT 10	HCTU 16 HBTU 16	HCTU 25 HCTT 25
A	14	18	22.4	25	30	35.5	45
B	12.4	16	19.9	22.5	27.3	32	40.5
C	9	10.5	10.5	10.5	12.5	12.5	14.5
D	3 ^{±0.04}	4 ^{±0.04}	4 ^{±0.04}	5 ^{±0.04}	6 ^{±0.04}	6 ^{±0.04}	6 ^{±0.04}
E	7.55	9.1	11.1	12.6	15.1	18.1	22.6
F	16 ^{±0.07}	20 ^{±0.09}	25 ^{±0.11}	28 ^{±0.13}	34 ^{±0.15}	40 ^{±0.17}	49 ^{±0.19}
G	13	17	21	24	28.5	34	42
H	13	16	21	20	22	29	38
J	16	20	25	25	27	35	45
定位銷/Positioning pin	ø3(h8)×8	ø4(h8)×10	ø4(h8)×10	ø5(h8)×10	ø6(h8)×12	ø6(h8)×12	ø6(h8)×14
錐形套/Taper sleeve models	HCTH01-TS	HCTH02-TS	HCTH04-TS	HCTH06-TS	HCTH10-TS	HCTH16-TS	HCTH25-TS

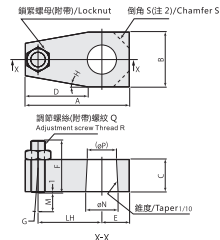
型號表示

HCTH □-□ (例: HCTH06-T2)

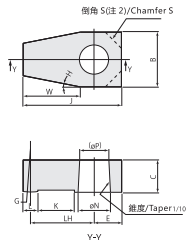


材質: S45C (鋼質 HB201~269)
Material: S45C (Refining Hb201~269)

T1型夾緊臂 / T1 type clamp arm



T2型夾緊臂 / T2 type clamp arm



夾緊臂型號 Clamp arm models	HCTH02-T1	HCTH04-T1	HCTH06-T1	HCTH10-T1	HCTH16-T1	HCTH25-T1
A	55	65	80	96	114	153
B	28	34	40	52	60	80
C	20	25	25	27	35	45
D	34	43	50	60	69	80
E	14	17	20	25	30	45
F	33	48	58	68	87	77
G	R30	R30	R40	R40	R50	R75
H	10"	10"	10"	10"	10"	20"
J	52	61	75	91	108	145
K	20	20	25	30	40	45
L	6	8	10	12	16	20
LH	35	40	50	60	70	90
M 調整量/adjustment amount	12	12	12	20	21	31
N	18	22.4	25	30	35.5	45
P	16	19.9	22.5	27.3	32	40.5
Q	M6×1	M8×1.25	M10×1.5	M12×1.75	M16×2	M20×2.5
S 倒角/chamfer	—	—	—	—	16	25
W	31	39	45	55	63	72
質量 Mass	T1 型 type 0.2 kg	0.3 kg	0.5 kg	0.8 kg	1.4 kg	2.9 kg
慣性矩 Moment of inertia	T1 型 type 9.1×10 ⁻⁶ kg·m ²	2.2×10 ⁻⁶ kg·m ²	5.2×10 ⁻⁶ kg·m ²	1.3×10 ⁻⁶ kg·m ²	3.0×10 ⁻⁶ kg·m ²	9.6×10 ⁻⁶ kg·m ²
T2 型 type 6.9×10 ⁻⁶ kg·m ²	1.6×10 ⁻⁶ kg·m ²	4.0×10 ⁻⁶ kg·m ²	9.6×10 ⁻⁶ kg·m ²	2.3×10 ⁻⁶ kg·m ²	6.5×10 ⁻⁶ kg·m ²	—
夾緊臂型號 Clamp arm models	HCTU02 HCTT02 HBTU02	HCTU04 HCTT04 HBTU04	HCTU06 HCTT06 HBTU06	HCTU10 HCTT10 HBTU10	HCTU16 HCTT16 HBTU16	HCTU25 HCTT25 HBTU25

1. 制作夾緊臂時，請考慮夾緊臂的強度。
(根據夾緊臂長度、使用油壓的不同，如果採用T1、T2型相同的截面尺寸，有時會強度不足。)
 2. 僅HCTH16-T1、T2 HCTH25-T1、T2型經過倒角處理。
 3. 未設置定位銷孔。
- Note 1. To make the clamping arm, please consider the strength of the clamping arm (Having same cross-sectional dimensions as T1 and T2 types may result in insufficient strength depending on clamp arm length and working pressure.)
2. Only HCTH16-T1、T2 and HCTH25-T1、T2 have chamfer.
3. Positioning pin hole is not provided.