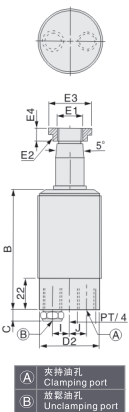
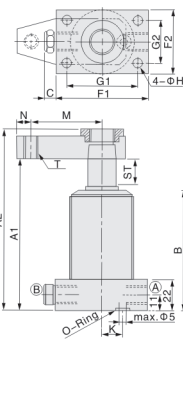


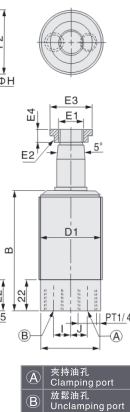
Theraded Type



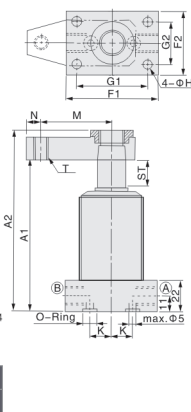
Flange Type



Tgreaded Type



Flange Type



(A) 夾持油孔  
Clamping port  
(B) 放鬆油孔  
Unclamping port

(A) 夾持油孔  
Clamping port  
(B) 放鬆油孔  
Unclamping port

外形尺寸表 Dimension table

UNIT:mm

ITEM	MODEL	HPS-25	HPS-40	HPS-50	HPS-63
ST:Swing/Clamping		18:7/11	22:8/14	26:11/15	27:12/15
A1		105.5	119.5	138	142
A2		126.5	147.5	172	182
B		84.5	94.5	110	119.5
C		8	8	8	8
D1	M45X1.5	M60X1.5	M80x2.0	M90x2.0	
D2	φ43	φ58	φ77	φ88	
E1	M18X15	M28X1.5	M35X1.5	M45X1.5	
E2	φ23.5	φ33.5	φ45.5	φ55.5	
E3	30	40	55	68	
E4	9	10	11	12	
F1	65	85	100	115	
F2	45	63	80	90	
G1	50	65	80	90	
G2	30	44	60	68	
H	φ6.5	φ8.5	φ13.5	φ16	
I	12	12.5	19	25.5	
J	12	19.5	26.5	34	
K	15	28	31	37.5	
O-Ring	P7	P7	P9	P9	
M	50	75	95	120	
N	10	15	15	18	
T	M10X1.5	M16X2	M16X2	M20X2.5	

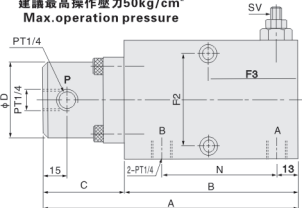
產品簡介

- ◆本產品機體內附油壓順序閥，預壓式特性操作時可將作動缸充滿油，達到預先設定之壓力，順序閥動作，即可獲得倍數增壓。
- ◆適用於油壓專用機，MC由低壓回路中。部份油壓缸需高壓操作之場合，僅需一搭電磁閥或安裝於管路中，即可操作HB增壓器，可將低油壓自動轉換成高油壓，獲得高壓支持。

Introduction of product

- ◆A hydraulic sequential valve is attached to this booster, when operating, it oils cylinder and makes it be at the dual pressure and let the sequential valve act, and then it will have multiple boosting pressure.
- ◆It's fit for hydraulic special purpose machine and MC clamp in low pressure circuit. It needs a solenoid valve installed in the circuit, and then it will be able to operate HB super-charger. The super-charger may be converted automatically from low oil-pressure into high oil-pressure and obtain a high pressure clamping

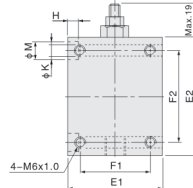
建議最高操作壓力50kg/cm<sup>2</sup>  
Max.operation pressure



SV油壓順序閥調整參考  
Adjustment reference for sv sequence valve

M6長度L	M6 Length L	mm	7	6	5	4	3	2	1
吸粘壓力	Start Pressure	kg/cm <sup>2</sup>	20	25	30	35	40	45	50

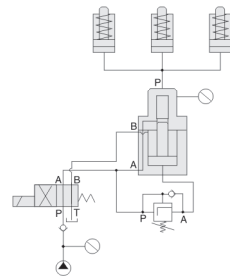
出廠設定壓力30kg/cm<sup>2</sup>  
Pressure set at 30kg/cm<sup>2</sup> before shipment



外形尺寸表 Dimension table 單位 (Unit) :mm

MODEL	HB-9 x 6	HB-8 x 22	HB-5 x 35	HB-3.8 x 45
增壓倍數 Multiple boost	9	8	5	3.8
高壓吐出量 High pressure output	6cc	22cc	35cc	45cc
A	157		210	
B	107		139	
C	50		71	
φD	φ46		φ58	
E1	58		82	
E2	72		100	
F1	43		62	
F2	56		80	
F3	55		70	
H	7		9	
φK	φ7		φ9	
φM	φ11		φ14	
N	71		96	

回路圖 Circuit diagram



A:進油, B:回油, P:出油